

WHAT CAN BE RECYCLED ON THE ISLE OF MAN AND WHERE?



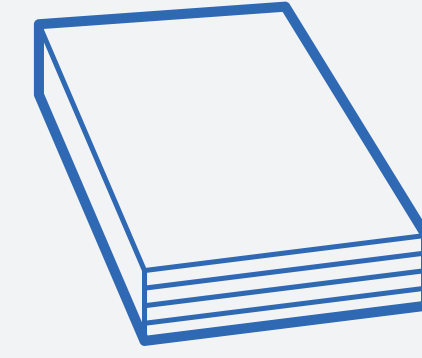
AEROSOLS

Aerosols can be recycled in your green kerbside box or at a Household Waste Recycling Centre. Aerosols should be completely used.



BICYCLES

Your old bicycles will be taken by the Reuse shop at the Eastern Household Waste Recycling Centre if they are in good condition. If they are beyond repair, take it to a Household Waste Recycling Centre and place in the scrap metal skip.



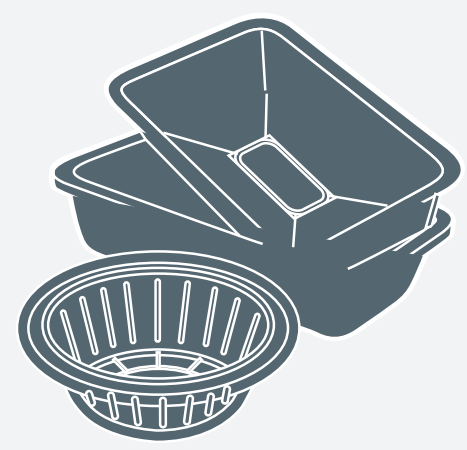
CATALOGUES

Catalogues can be recycled in your blue kerbside box, at a Household Waste Recycling Centre or in a paper banks at the one of the bring banks.



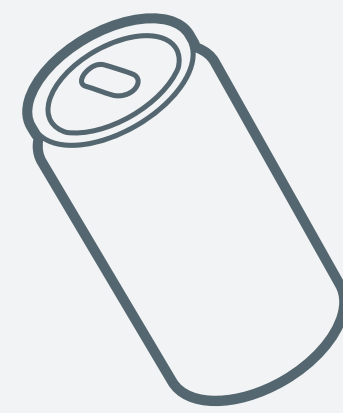
BOOKS

Books can be taken to charity shops, to a Household Waste Recycling Centre or to a bring bank and place in book bank.



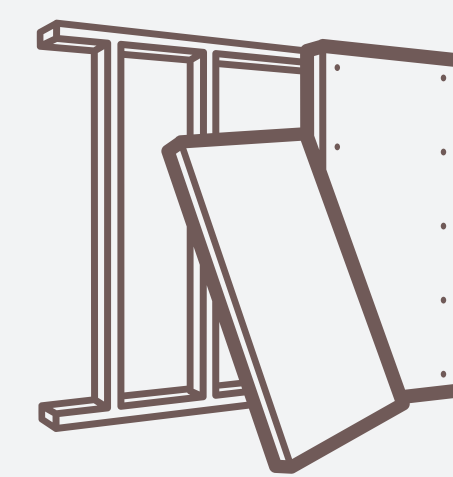
FOIL

Foil can be recycled at a Household Waste Recycling Centre, Bring bank or green kerbside box. Foil items include takeaway trays, pie and quiche cases and oven ready meals.



ALUMINIUM

Cans can be recycled at Household Waste Recycling Centres or at a bring bank site. Household items such as saucepans that are still in good condition can be reused at a local charity shop for example, or take to a Household Waste Recycling Centre.



BUILDING WASTE

Small amounts of building waste can be disposed of at a Household Waste Recycling Centre. Building waste should not be placed in a household bin.



BATTERIES

Dry cell batteries can be recycled at a Household Waste Recycling Centre or at battery recycling points provided by many major retailers. Batteries should not be placed in a household bin.



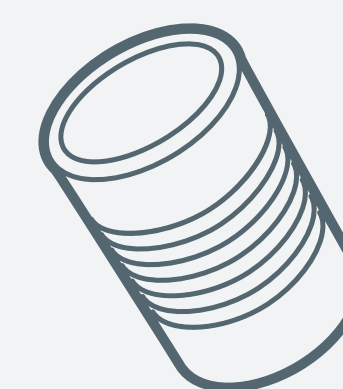
DOMESTIC APPLIANCES

Domestic appliances can be taken to a Household Waste Recycling Centre.



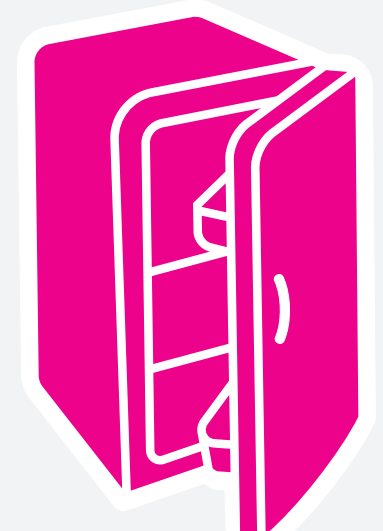
CLOTHING AND TEXTILES

items can be taken to a Household Waste Recycling Centre or to a bring bank textile bank.



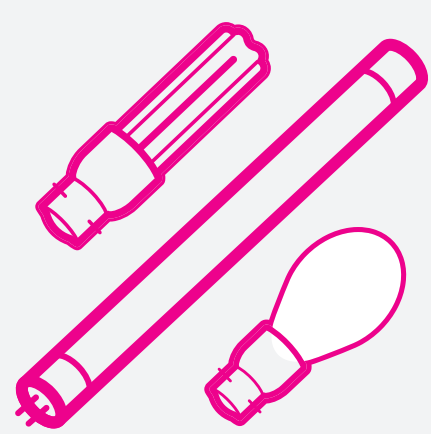
STEEL

Please place steel in your Green kerbside box, or take to a Household Waste Recycling Centre or bring bank.



FRIDGES

Fridges can be recycled at the Eastern Household Waste Recycling Centre (charges apply).



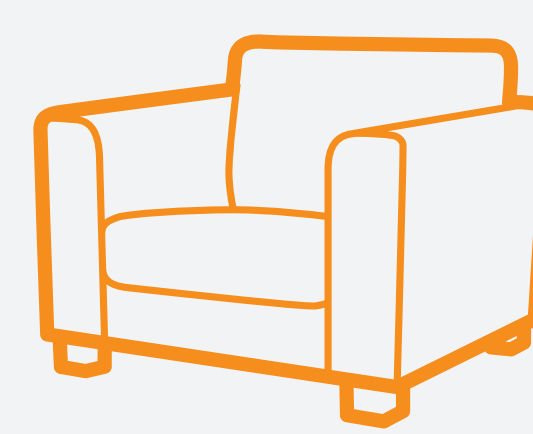
LAMPS AND BULBS

These can be recycled at Household Waste Recycling Centres for a small charge. Lamps and bulbs should not be placed in a household bin.



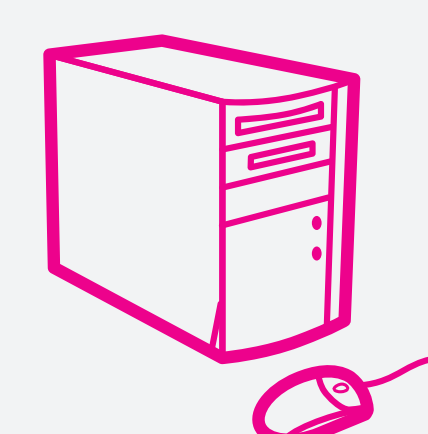
PLASTIC

Plastic Bottle recycling facilities are available using the Kerbside Collection green box and at a Household Waste Recycling Centre. Please do not place any plastic other than bottles into the bring banks or Kerbside Recycling boxes as they are classed as contamination.



FURNITURE

that cannot be reused can be taken to a Household Waste Recycling Centre.



COMPUTER EQUIPMENT, TVS AND MONITORS

Can be recycled at a Household Waste Recycling Centre (charges may apply).



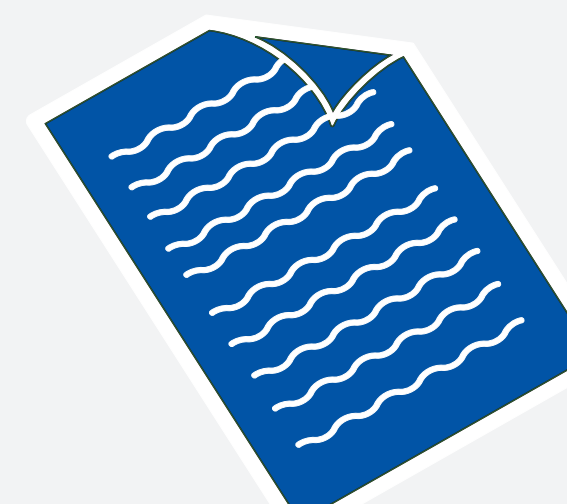
ENVELOPES

White envelopes can be placed in your blue kerbside box.



GLASS

facilities for this can be found at a Household Waste Recycling Centre, Bring Banks and at kerbside collection.



PAPER

Paper can be recycled at a Household Waste Recycling Centre, bring bank or in your blue kerbside box.



NEWSPAPERS & MAGAZINES

Magazines can be recycled with newspapers in your blue kerbside box, at Household Waste Recycling Centres or in bring banks.